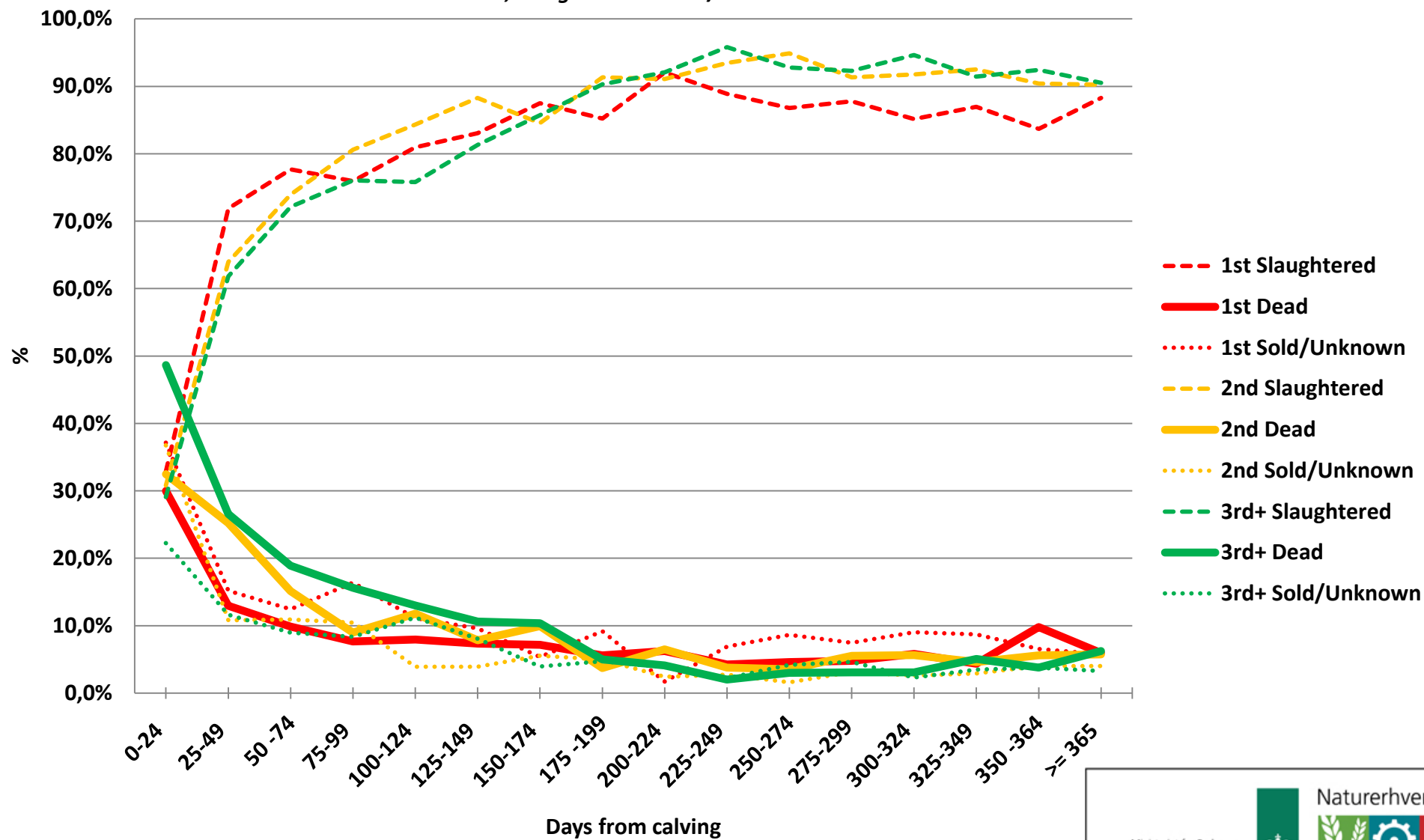


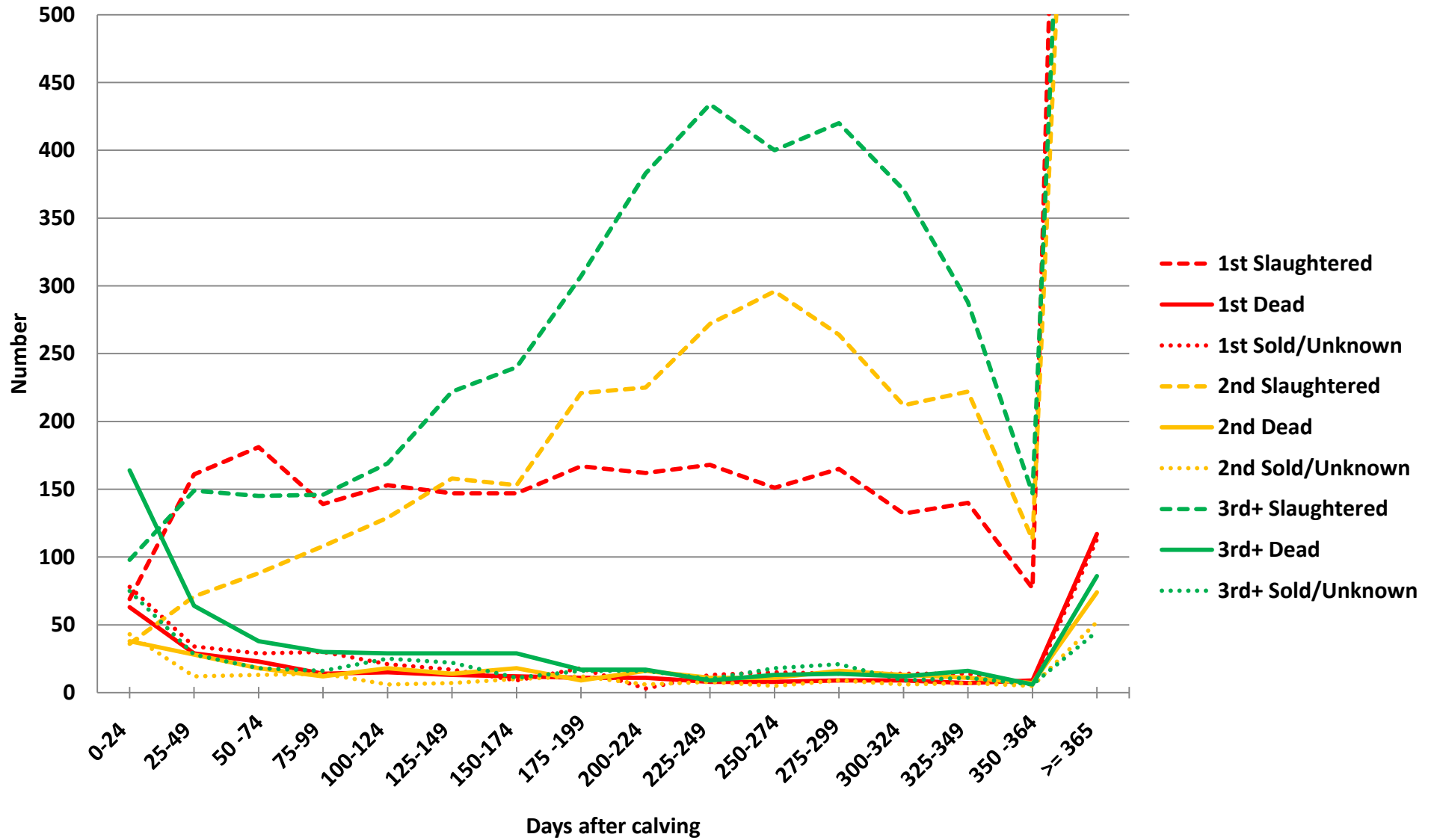
RDC: Distribution of cows disposed in 2012 depending of stage of lactation

Dead, slaughtered or sold/unknow



RDC: Number of cows disposed in 2012 depending of stage of lactation

Dead, slaughtered or sold/unknown



Day	1st		2nd		3rd and later		Numbers			1st		2nd		3rd and later								
	laughtered	1st Dead /Unknown	laughtered	2nd Dead /Unknown	laughtered	3rd+ Dead /Unknown	1st	2nd	3rd+	Day	laughtered	1st Dead /Unknown	laughtered	2nd Dead /Unknown	laughtered	3rd+ Dead /Unknown						
0-24	32,9%	30,0%	37,1%	30,8%	32,5%	36,8%	29,1%	48,7%	22,3%	210	117	337	0-24	69	63	78	36	38	43	98	164	75
25-49	71,9%	12,9%	15,2%	64,0%	25,2%	10,8%	61,8%	26,6%	11,6%	224	111	241	25-49	161	29	34	71	28	12	149	64	28
50 -74	77,7%	9,9%	12,4%	74,0%	15,1%	10,9%	72,1%	18,9%	9,0%	233	119	201	50 -74	181	23	29	88	18	13	145	38	18
75-99	76,0%	7,7%	16,4%	80,6%	9,0%	10,4%	76,0%	15,6%	8,3%	183	134	192	75-99	139	14	30	108	12	14	146	30	16
100-124	81,0%	7,9%	11,1%	84,3%	11,8%	3,9%	75,8%	13,0%	11,2%	189	153	223	100-124	153	15	21	129	18	6	169	29	25
125-149	83,1%	7,3%	9,6%	88,3%	7,8%	3,9%	81,3%	10,6%	8,1%	177	179	273	125-149	147	13	17	158	14	7	222	29	22
150-174	87,5%	7,1%	5,4%	84,5%	9,9%	5,5%	85,7%	10,4%	3,9%	168	181	280	150-174	147	12	9	153	18	10	240	29	11
175 -199	85,2%	5,6%	9,2%	91,3%	3,7%	5,0%	90,3%	5,0%	4,7%	196	242	340	175 -199	167	11	18	221	9	12	307	17	16
200-224	92,0%	6,3%	1,7%	91,1%	6,5%	2,4%	92,1%	4,1%	3,8%	176	247	416	200-224	162	11	3	225	16	6	383	17	16
225-249	88,9%	4,2%	6,9%	93,5%	3,8%	2,7%	95,8%	2,0%	2,2%	189	291	453	225-249	168	8	13	272	11	8	434	9	10
250-274	86,8%	4,6%	8,6%	94,9%	3,5%	1,6%	92,8%	3,0%	4,2%	174	312	431	250-274	151	8	15	296	11	5	400	13	18
275-299	87,8%	4,8%	7,4%	91,3%	5,5%	3,1%	92,3%	3,1%	4,6%	188	289	455	275-299	165	9	14	264	16	9	420	14	21
300-324	85,2%	5,8%	9,0%	91,8%	5,6%	2,6%	94,6%	3,1%	2,3%	155	231	392	300-324	132	9	14	212	13	6	371	12	9
325-349	87,0%	4,3%	8,7%	92,5%	4,6%	2,9%	91,4%	5,1%	3,5%	161	240	315	325-349	140	7	14	222	11	7	288	16	11
350 -364	83,7%	9,8%	6,5%	90,4%	5,6%	4,0%	92,5%	3,8%	3,8%	92	125	159	350 -364	77	9	6	113	7	5	147	6	6
>= 365	88,3%	6,0%	5,8%	90,2%	5,7%	4,0%	90,5%	6,2%	3,3%	1963	1292	1379	>= 365	1733	117	113	1166	74	52	1248	86	45